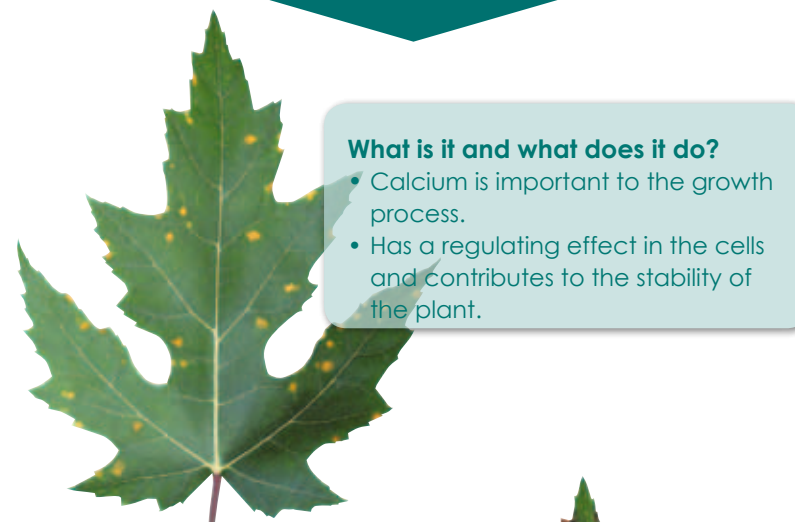


First aid for deficiencies

Calcium



What is it and what does it do?

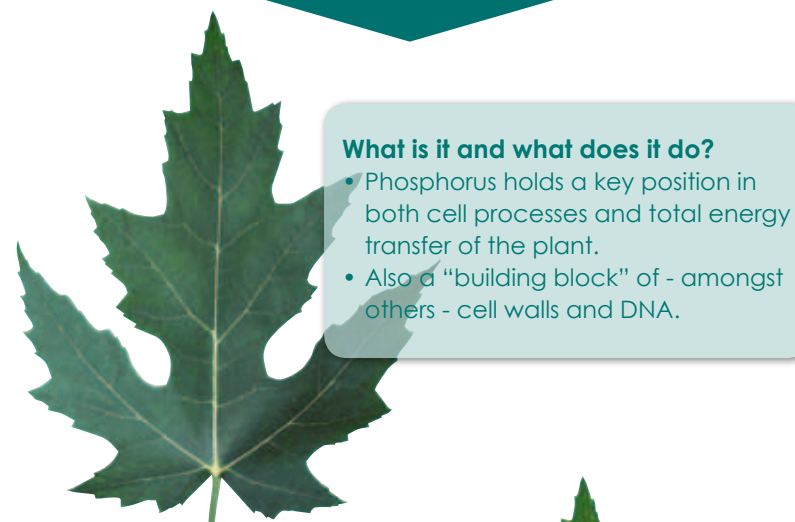
- Calcium is important to the growth process.
- Has a regulating effect in the cells and contributes to the stability of the plant.

What can you see?
Yellow/brown spots, surrounded by a sharp brown outlined edge.



What can you do?
Add calcium by applying a liquid lime fertilizer such as a Calcium nitrate solution.

Phosphorus

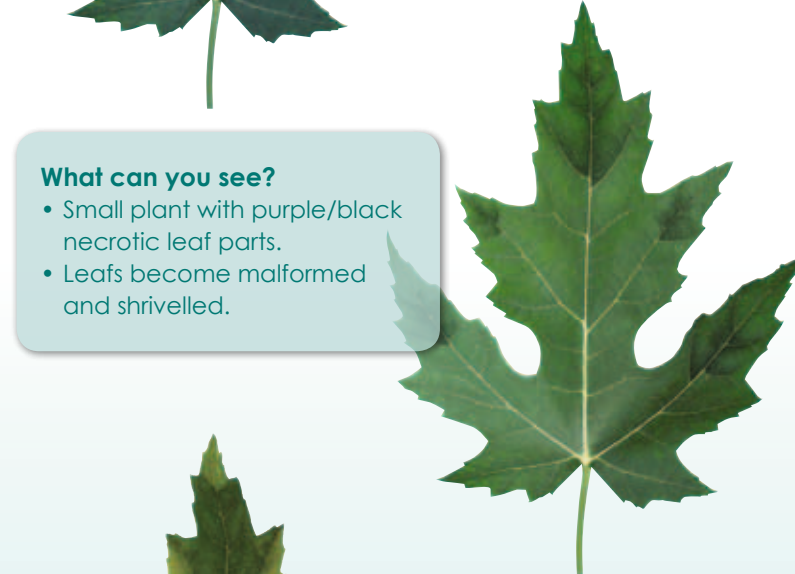


What is it and what does it do?

- Phosphorus holds a key position in both cell processes and total energy transfer of the plant.
- Also a "building block" of - amongst others - cell walls and DNA.

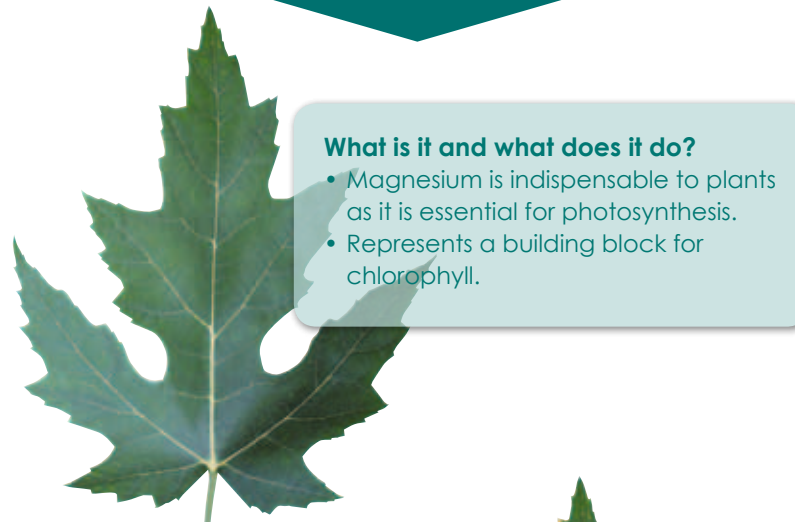
What can you see?

- Small plant with purple/black necrotic leaf parts.
- Leaves become malformed and shrivelled.



What can you do?
Mix inorganic phosphate fertilizer THOROUGHLY through the potting mix or add extra liquid phosphate when growing in hydroponics.

Magnesium



What is it and what does it do?

- Magnesium is indispensable to plants as it is essential for photosynthesis.
- Represents a building block for chlorophyll.

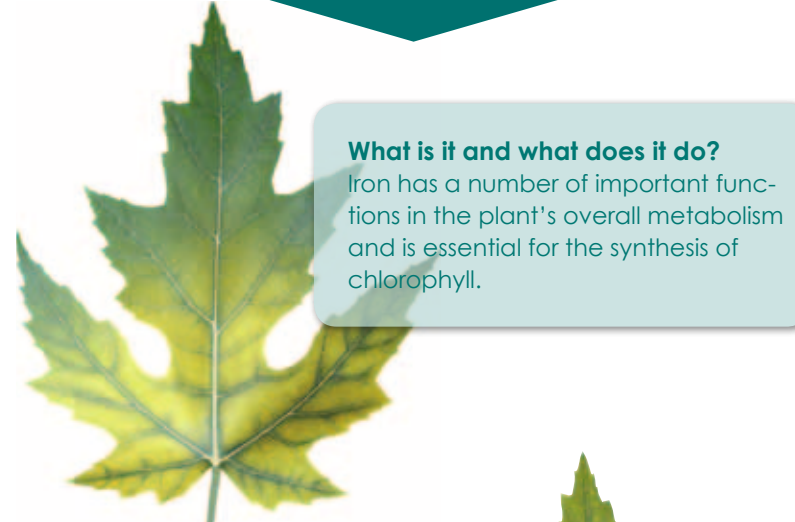
What can you see?

- Rusty brown spots.
- Cloudy, vague yellow spots between the veins.



What can you do?
Spray with a 2% solution of Epsom salts every 4-5 days during about a week.

Iron



What is it and what does it do?
Iron has a number of important functions in the plant's overall metabolism and is essential for the synthesis of chlorophyll.

What can you see?

- Strong yellowing of especially the young leaves.
- Growth shoots between the veins.



What can you do?
The best thing is to spray the plants with a watery solution of EDDHA or EDTA chelates.

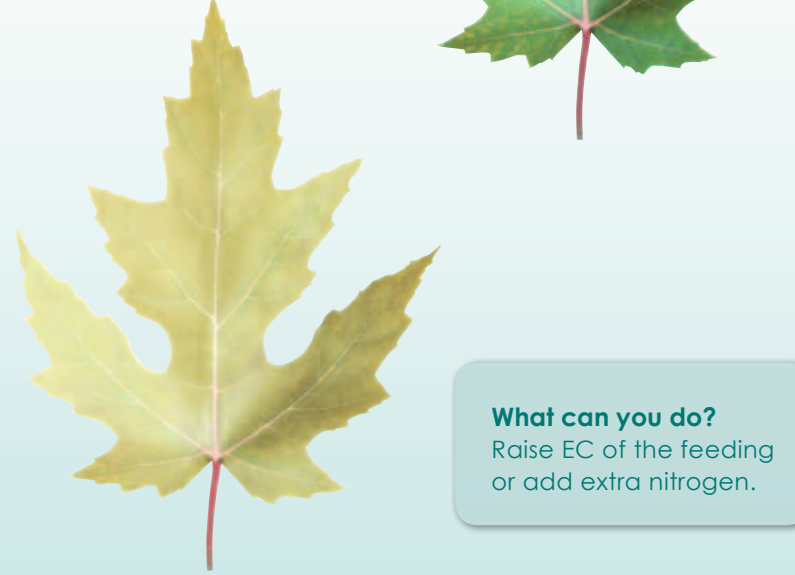
Nitrogen



What is it and what does it do?
Nitrogen is a component of enzymes and is therefore involved in all enzyme reactions and plays an active role in the plant's metabolism.

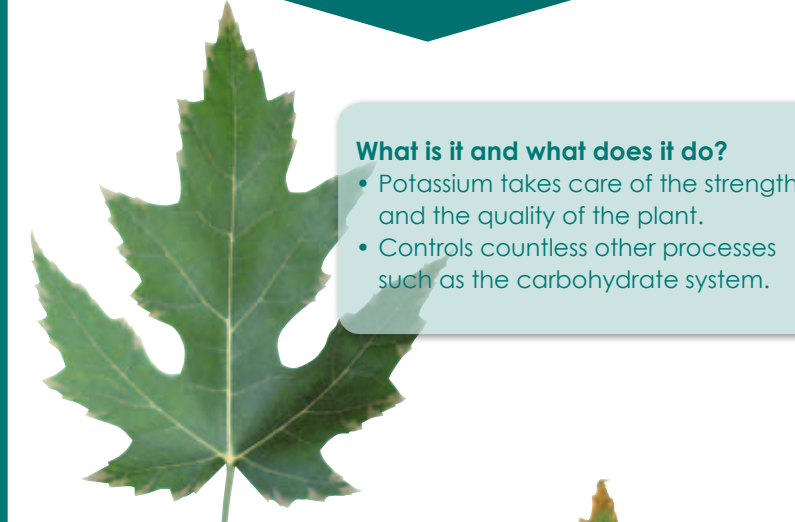
What can you see?

- Purple stalks.
- Yellowing leaves.
- Leaves fall off.



What can you do?
Raise EC of the feeding or add extra nitrogen.

Potassium



What is it and what does it do?

- Potassium takes care of the strength and the quality of the plant.
- Controls countless other processes such as the carbohydrate system.

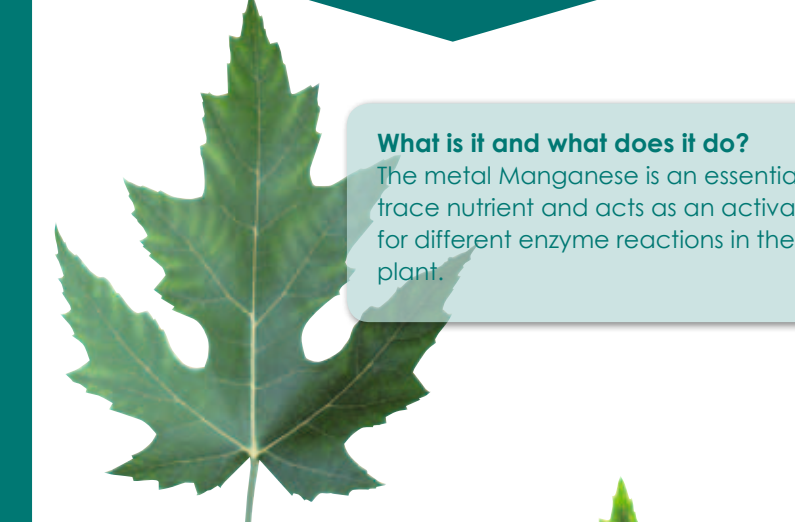
What can you see?
Dead edges on the leaves.



What can you do?

- In case the EC in the substrate or potting mix is high, you can rinse it with clean water.
- Add potassium yourself.

Manganese



What is it and what does it do?
The metal Manganese is an essential trace nutrient and acts as an activator for different enzyme reactions in the plant.

What can you see?
Yellow stripes appear between the leaf's side veins.



What can you do?
Using products that contain trace elements.

